

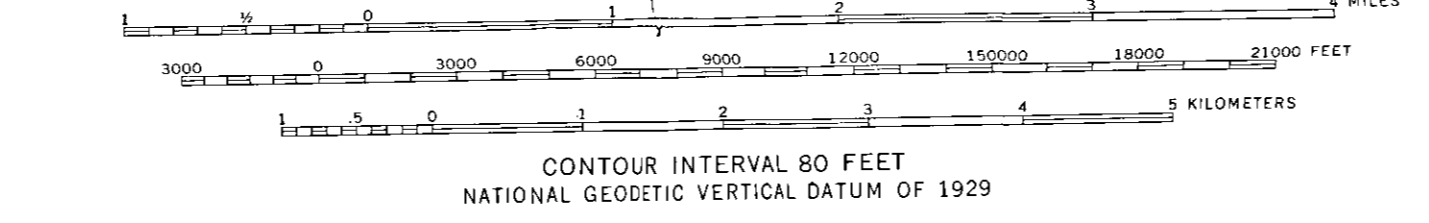
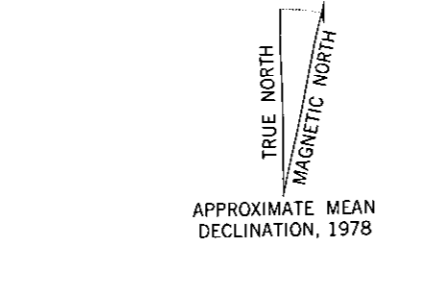


Mapped, edited, and published by the Geological Survey in cooperation with Colorado Division of Planning, Department of Local Affairs.
Compiled from USGS 1:24,000 Topographic maps dated 1953-1962. See index for dates of individual maps. Partially revised from aerial photographs taken 1975 and 1976 and from other official sources. Revised information not field checked. Map edited 1978.
Projection and 20,000-foot grid ticks: Colorado coordinate system, north zone (Lambert conformal conic).
5000-meter Universal Transverse Mercator Datum, zone 13. 1927 North American Datum.
Where omitted, land lines have not been established or are not shown because of insufficient data.

MAP INDEX

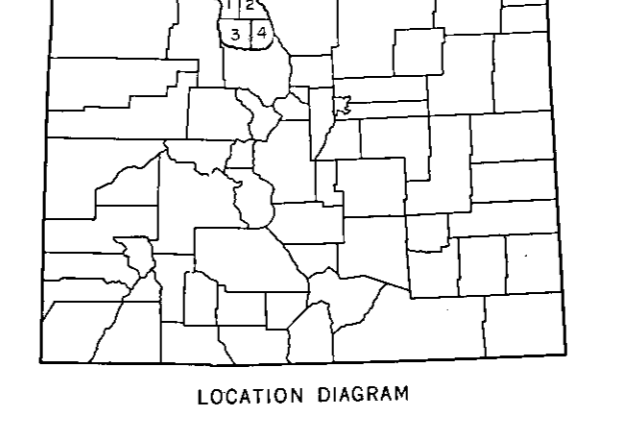
1	2	3	4
5	6	7	8
9	10	11	12
13	14	15	16

1. MAPS 1:24,000
2. MAPS 1:50,000
3. MAPS 1:62,500
4. MAPS 1:125,000
5. MAPS 1:250,000
6. MAPS 1:500,000
7. MAPS 1:1,000,000
8. MAPS 1:2,000,000
9. MAPS 1:5,000,000
10. MAPS 1:10,000,000
11. MAPS 1:20,000,000
12. MAPS 1:50,000,000
13. MAPS 1:100,000,000
14. MAPS 1:200,000,000
15. MAPS 1:500,000,000
16. MAPS 1:1,000,000,000



CONTOUR VALUES

1100	1200	1300	1400	1500	1600	1700	1800	1900	2000
2100	2200	2300	2400	2500	2600	2700	2800	2900	3000
3100	3200	3300	3400	3500	3600	3700	3800	3900	4000
4100	4200	4300	4400	4500	4600	4700	4800	4900	5000
5100	5200	5300	5400	5500	5600	5700	5800	5900	6000
6100	6200	6300	6400	6500	6600	6700	6800	6900	7000
7100	7200	7300	7400	7500	7600	7700	7800	7900	8000
8100	8200	8300	8400	8500	8600	8700	8800	8900	9000
9100	9200	9300	9400	9500	9600	9700	9800	9900	10000



LEGEND

Perennial stream, lake	—
Intermittent stream, lake	—
Public park or recreation area	—
National and State Forest or game land area	—
Other public area or Military or Indian Reservation	—

ROAD CLASSIFICATION

Primary highway, hard surface	Light duty road, hard or improved surface
Secondary highway, hard surface	Unimproved road
Interstate Route	U. S. Route
	State Route

North Park Hospital District
LGID#: 29004

JACKSON COUNTY, COLORADO
COUNTY MAP SERIES (TOPOGRAPHIC)
SHEET 1 OF 4

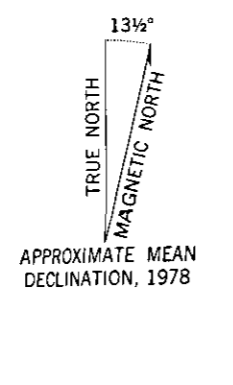


Mapped, edited, and published by the Geological Survey in cooperation with Colorado Division of Planning, Department of Local Affairs.
Compiled from USGS 1:24 000-scale topographic maps, 1955-1962. See index for dates of individual maps. Partially revised from aerial photographs taken 1975-1976 and from other official sources. Revised information not field checked. Map edited 1978.
Projection and 20 000-foot grid ticks: Colorado coordinate system, north zone (Lambert conformal conic). 5000-meter Universal Transverse Mercator grid, zone 13. 1927 North American Datum.
Where omitted, land lines have not been established or are not shown because of insufficient data.

MAP INDEX

1	2	3	4
5	6	7	8
9	10	11	12
13	14	15	16

1. DAKOTA CREEK-2511
2. SAGINAW MOUNTAIN-1041
3. TRINITY CANYON-1011
4. SAGINAW CANYON-1011
5. SAGINAW CANYON-1011
6. SAGINAW CANYON-1011
7. SAGINAW CANYON-1011
8. SAGINAW CANYON-1011
9. SAGINAW CANYON-1011
10. SAGINAW CANYON-1011
11. SAGINAW CANYON-1011
12. SAGINAW CANYON-1011
13. SAGINAW CANYON-1011
14. SAGINAW CANYON-1011



CONTOUR VALUES

2000	2000
1000	2000
500	2000
200	2000
100	2000
50	2000
25	2000
12.5	2000
6.25	2000
3.125	2000
1.5625	2000
0.78125	2000
0.390625	2000
0.1953125	2000
0.09765625	2000
0.048828125	2000
0.0244140625	2000
0.01220703125	2000
0.006103515625	2000
0.0030517578125	2000
0.00152587890625	2000
0.000762939453125	2000
0.0003814697265625	2000
0.00019073486328125	2000
0.000095367431640625	2000
0.0000476837158203125	2000
0.00002384185791015625	2000
0.000011920928955078125	2000
0.0000059604644775390625	2000
0.00000298023223876953125	2000
0.000001490116119384765625	2000
0.0000007450580596923828125	2000
0.00000037252902984619140625	2000
0.000000186264514923095703125	2000
0.0000000931322574615478515625	2000
0.000000046566128730773928125	2000
0.0000000232830643653869640625	2000
0.00000001164153218269348203125	2000
0.000000005820766091346741015625	2000
0.0000000029103830456733705078125	2000
0.00000000145519152283668525390625	2000
0.000000000727595761418342626953125	2000
0.0000000003637978807091713131265625	2000
0.0000000001818989403545856565625	2000
0.00000000009094947017729282828125	2000
0.000000000045474735088646414140625	2000
0.0000000000227373675443232070703125	2000
0.00000000001136868377216161603515625	2000
0.0000000000056843418860808017578125	2000
0.00000000000284217094304040087890625	2000
0.000000000001421085471520200439453125	2000
0.0000000000007105427357601002197265625	2000
0.00000000000035527136788005010936328125	2000
0.000000000000177635683940025054681640625	2000
0.0000000000000888178419700125273408203125	2000
0.00000000000004440892098500626367161015625	2000
0.00000000000002220446049250313183580578125	2000
0.00000000000001110223024625156917915390625	2000
0.0000000000000055511151231282094595765625	2000
0.0000000000000027755575615611452977828125	2000
0.00000000000000138777878078057264889140625	2000
0.000000000000000693889390390286324445703125	2000
0.000000000000000346944695195143162222865625	2000
0.0000000000000001734723475975715811114328125	2000
0.00000000000000008673617379878579055571640625	2000
0.00000000000000004336808689939289527788203125	2000
0.0000000000000000216840434496964476389140625	2000
0.00000000000000001084202172484822381945703125	2000
0.0000000000000000054210108624241119097265625	2000
0.00000000000000000271050543121205954881640625	2000
0.000000000000000001355252715606029774445703125	2000
0.000000000000000000677626357803014887222865625	2000
0.000000000000000000338813178901507444381640625	2000
0.00000000000000000016940658945075372219097265625	2000
0.000000000000000000084703294725376861094881640625	2000
0.00000000000000000004235164736268430547222865625	2000
0.0000000000000000000211758236813421527361640625	2000
0.0000000000000000000105879118406711363808203125	2000
0.00000000000000000000529395592033568194445703125	2000
0.00000000000000000000264697796016784097222865625	2000
0.0000000000000000000013234889800839204881640625	2000
0.00000000000000000000066174449004196024445703125	2000
0.00000000000000000000033087224502098012222865625	2000
0.000000000000000000000165436122510490061114328125	2000
0.0000000000000000000000827180612524950305571640625	2000
0.00000000000000000000004135903062624751527788203125	2000
0.0000000000000000000000206795153131237576389140625	2000
0.0000000000000000000000103397576565618788445703125	2000
0.000000000000000000000005169878828278394222865625	2000
0.000000000000000000000002584939414139192114328125	2000
0.00000000000000000000000129246970706959605571640625	2000
0.00000000000000000000000064623485353479527788203125	2000
0.00000000000000000000000032311742676724976389140625	2000
0.000000000000000000000000161558713383624988445703125	2000
0.000000000000000000000000080779356916812494222865625	2000
0.000000000000000000000000040389678458406247114328125	2000
0.000000000000000000000000020194839229203136571640625	2000
0.000000000000000000000000010097419614601578389140625	2000
0.000000000000000000000000005048709807300789445703125	2000
0.0000000000000000000000000025243549036503947222865625	2000
0.00000000000000000000000000126217745182519736389140625	2000
0.000000000000000000000000000631088725912559868445703125	2000
0.00000000000000000000000000031554436295627944222865625	2000
0.00000000000000000000000000015777218147813972114328125	2000
0.0000000000000000000000000000788860907390698605571640625	2000
0.0000000000000000000000000000394430453695349327788203125	2000
0.00000000000000000000000000001972152268476746389140625	2000
0.0000000000000000000000000000098607613423837319445703125	2000
0.00000000000000000000000000000493038067119168697222865625	2000
0.0000000000000000000000000000024651903355958436389140625	2000
0.000000000000000000000000000001232595167797921819445703125	2000
0.0000000000000000000000000000006162975838989609597222865625	2000
0.000000000000000000000000000000308148791949454976389140625	2000
0.00000000000000000000000000000015407439597472746389140625	2000
0.0000000000000000000000000000000770371979873637319445703125	2000
0.00000000000000000000000000000003851859899368187222865625	2000
0.0000000000000000000000000000000192592994968403936389140625	2000
0.0000000000000000000000000000000096296497484201968445703125	2000
0.0000000000000000000000000000000048148248724200984222865625	2000
0.000000000000000000000000000000002407412436210049114328125	2000
0.0000000000000000000000000000000012037062181002455571640625	2000
0.000000000000000000000000000000000601853105001227788203125	2000
0.00000000000000000000000000000000030092652500061389140625	2000
0.00000000000000000000000000000000015046326250003069445703125	2000
0.0000000000000000000000000000000000752316312500015347222865625	2000
0.000000000000000000000000000000000037615815625000076736389140625	2000
0.0000000000000000000000000000000000188079078125000038368445703125	2000
0.00000000000000000000000000000000000940395390625000019184222865625	2000
0.000000000000000000000000000000000004701976953125000009592114328125	2000
0.00000000000000000000000000000000000235098847656250000047960571640625	2000
0.0000000000000000000000000000000000011754942382812500000239802881640625	2000
0.000000000000000000000000000000000000587747119140625000001199014408203125	2000
0.00000000000000000000000000000000000029387355957031250000005995072040625	2000
0.00000000000000000000000000000000000014693677978820312500000029975360203125	2000
0.00000000000000000000000000000000000007346838989609597222865625	2000
0.000000000000000000000000000000000000036734194945703125	2000
0.000000000000000000000000000000000000018367097472746389140625	2000
0.00000000000000000000000000000000000000918354873637319445703125	2000
0.000000000000000000000000000000000000004591772368187222865625	2000
0.00000000000000000000000000000000000000229588618403936389140625	2000
0.00000000000000000000000000000000000000114794309201968445703125	2000
0.00000000000000000000000000000000000000057397154600984222865625	2000
0.0000000000000000000000000000000000000002869857730049114328125	2000
0.000000000000000000000000000000000000000143492886500245571640625	2000
0.007174644325001227788203125	2000
0.003587322162500061389140625	2000
0.001793661081250003069445703125	2000
0.00089683054062500015347222865625	2000
0.0004484152703125000076736389140625	2000
0.00022420763515625000038368445703125	2000
0.00011210381778125000019184222865625	2000
0.005605190890625000009592114328125	2000
0.00280259544531250000047960571640625	2000
0.0014012977226562500000239802881640625	2000
0.0007006488613125000001199014408203125	2000
0.00035032443065625000005995072040625	2000
0.0001751622153281250000029975360203125	2000
0.00875811076562500000149876801015625	2000
0.00437905538281250000074938400578125	2000
0.002189527691406250000037469200288125	2000
0.00109476384570312500000187346001440625	2000
0.0005473819228515625000000936730007203125	2000
0.000273690961425781250000004683650036015625	2000
0.000136845480712890	



Mapped, edited, and published by the Geological Survey in cooperation with Colorado Division of Planning, Department of Local Affairs.
Compiled from USGS 1:24 000 topographic maps dated 1950-1962. See index for dates of individual maps.
Partially revised from aerial photographs taken 1975-76 and from other official sources. Revised information not field checked. Map edited 1978.
Projection and 20 000-foot grid ticks: Colorado coordinate system, north zone (Lambert conformal conic) 5000-meter Universal Transverse Mercator grid, zone 13. 1927 North American Datum.
Red tint indicates areas within corporate boundaries or in which only landmark buildings are shown.
Where omitted, land lines have not been established or are not shown because of insufficient data.

MAP INDEX

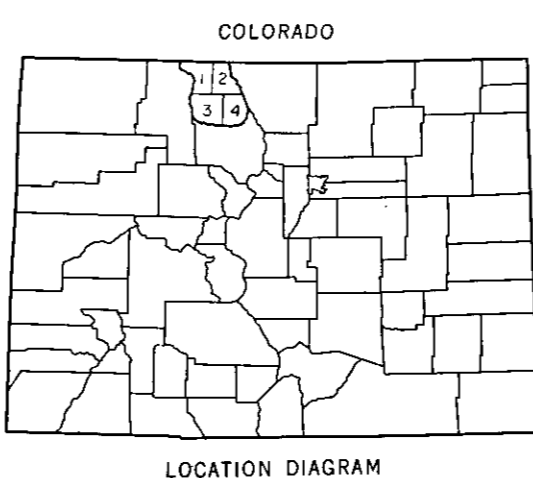
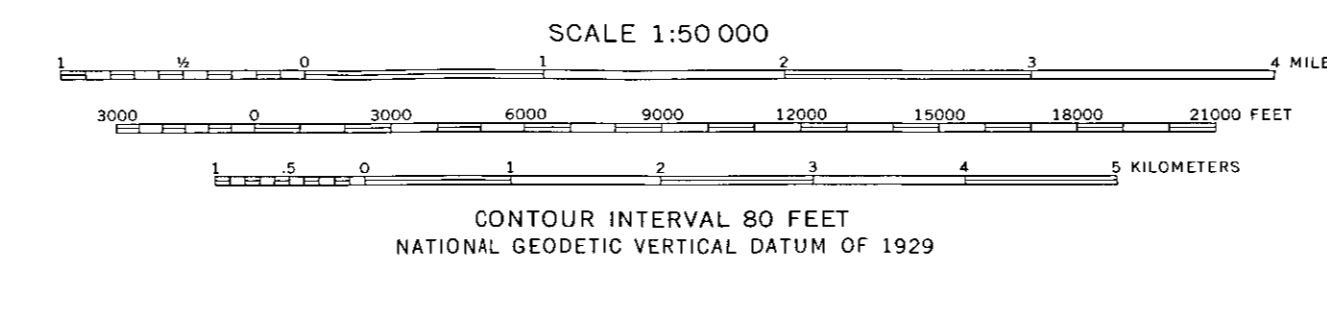
1	2	3	4
5	6	7	8
9	10	11	12
13	14	15	16

1. BROWN 1950
2. BROWN 1951
3. BROWN 1952
4. BROWN 1953
5. BROWN 1954
6. BROWN 1955
7. BROWN 1956
8. BROWN 1957
9. BROWN 1958
10. BROWN 1959
11. BROWN 1960
12. BROWN 1961
13. BROWN 1962
14. BROWN 1963

CONTOUR VALUES

1000	1100	1200	1300	1400	1500	1600	1700	1800	1900	2000	2100	2200	2300	2400	2500	2600	2700	2800	2900	3000	3100	3200	3300	3400	3500	3600	3700	3800	3900	4000	4100	4200	4300	4400	4500	4600	4700	4800	4900	5000	5100	5200	5300	5400	5500	5600	5700	5800	5900	6000	6100	6200	6300	6400	6500	6600	6700	6800	6900	7000	7100	7200	7300	7400	7500	7600	7700	7800	7900	8000	8100	8200	8300	8400	8500	8600	8700	8800	8900	9000	9100	9200	9300	9400	9500	9600	9700	9800	9900	10000
------	------	------	------	------	------	------	------	------	------	------	------	------	------	------	------	------	------	------	------	------	------	------	------	------	------	------	------	------	------	------	------	------	------	------	------	------	------	------	------	------	------	------	------	------	------	------	------	------	------	------	------	------	------	------	------	------	------	------	------	------	------	------	------	------	------	------	------	------	------	------	------	------	------	------	------	------	------	------	------	------	------	------	------	------	------	------	------	------	------	-------

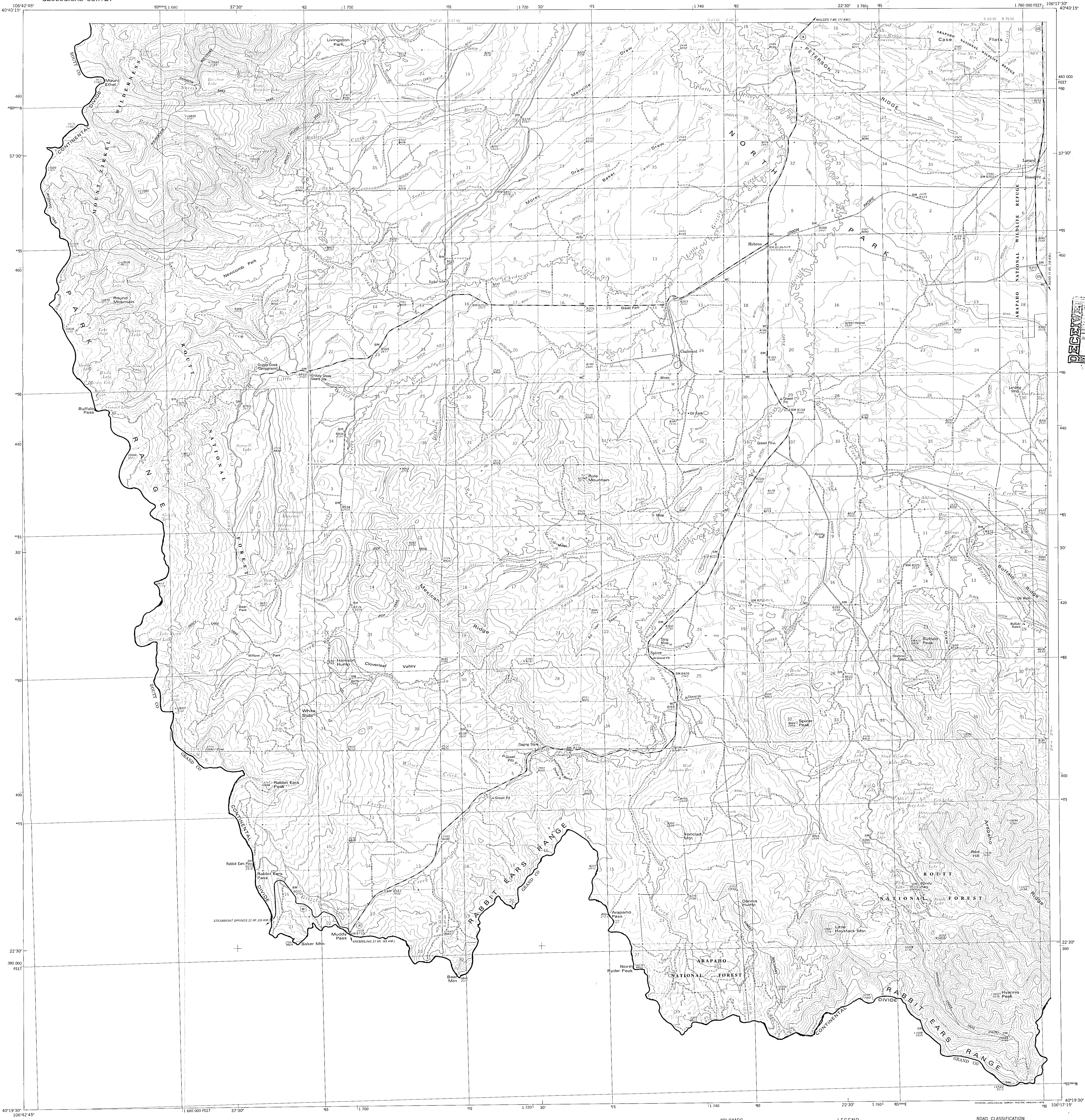
APPROXIMATE MEAN DECLINATION, 1978



LEGEND

Perennial stream, lake	Intermittent stream, lake	Public park or recreation area	National and State Forest or game land area	Other public area or Military or Indian Reservation	
Primary highway, hard surface	Secondary highway, hard surface	Unimproved road	Interstate Route	U. S. Route	State Route
Light-duty road, hard or improved surface	Light-duty road, hard or improved surface	Light-duty road, hard or improved surface	Light-duty road, hard or improved surface	Light-duty road, hard or improved surface	

JACKSON COUNTY, COLORADO
40106-F3-CF-050-2
1978
SHEET 2 OF 4



RECEIVED
JUN 24 1988
Division of Local Government

Mapped, edited, and published by the Geological Survey in cooperation with Colorado Division of Planning, Department of Local Affairs.
Compiled from USGS 1:24 000-scale topographic maps dated 1955-1956. See index for dates of individual maps. Partially revised from aerial photographs taken 1975 and from other official sources. Revised information not field checked. Map edited 1978.
Projection and 20 000-foot grid ticks: Colorado coordinate system, north zone (Lambert conformal conic) 5000-meter Universal Transverse Mercator grid, zone 13 1927 North American datum.
Where omitted, land lines have not been established or are not shown because of insufficient data.
There may be private inholdings within the boundaries of the Arapaho National Forest, Arapaho National Wildlife Refuge, and Routt National Forest.

MAP INDEX

1	2	3	4
5	6	7	8
9	10	11	12
13	14	15	16

1. NEAR 1961-1955
2. PROPOSED MOUNTAIN 1955
3. BURNED 1955
4. BURNED 1955
5. BURNED 1955
6. BURNED 1955
7. BURNED 1955
8. BURNED 1955
9. BURNED 1955
10. BURNED 1955
11. BURNED 1955
12. BURNED 1955
13. BURNED 1955
14. BURNED 1955
15. BURNED 1955
16. BURNED 1955

APPROXIMATE MEAN DECLINATION, 1978

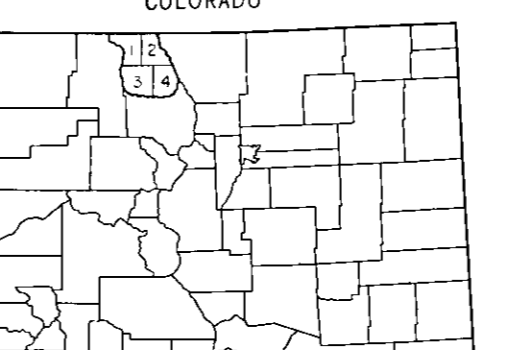
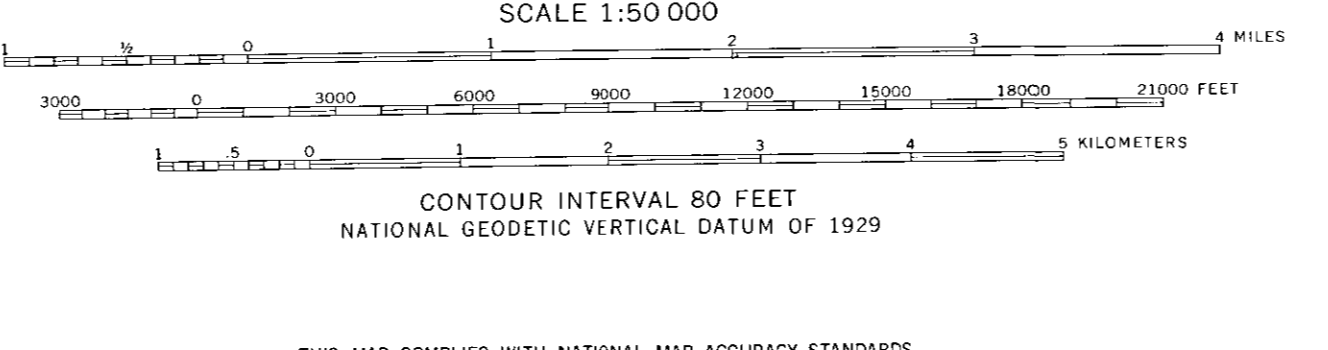
231°

TRUE NORTH

MAGNETIC NORTH

CONTOUR VALUES

1000	1000
1100	1000
1200	1000
1300	1000
1400	1000
1500	1000
1600	1000
1700	1000
1800	1000
1900	1000
2000	1000
2100	1000
2200	1000
2300	1000
2400	1000
2500	1000
2600	1000
2700	1000
2800	1000
2900	1000
3000	1000
3100	1000
3200	1000
3300	1000
3400	1000
3500	1000
3600	1000
3700	1000
3800	1000
3900	1000
4000	1000
4100	1000
4200	1000
4300	1000
4400	1000
4500	1000
4600	1000
4700	1000
4800	1000
4900	1000
5000	1000



LEGEND

Perennial stream, lake	Light duty road, hard or improved surface
Intermittent stream, lake	Secondary highway, hard surface
Public park or recreation area	Unimproved road
National and State Forest or game land area	Interstate Route
Other public area or Military or Indian Reservation	U. S. Route
	State Route

ROAD CLASSIFICATION

Primary highway, hard surface	Light duty road, hard or improved surface
Secondary highway, hard surface	Unimproved road
Interstate Route	U. S. Route
	State Route